

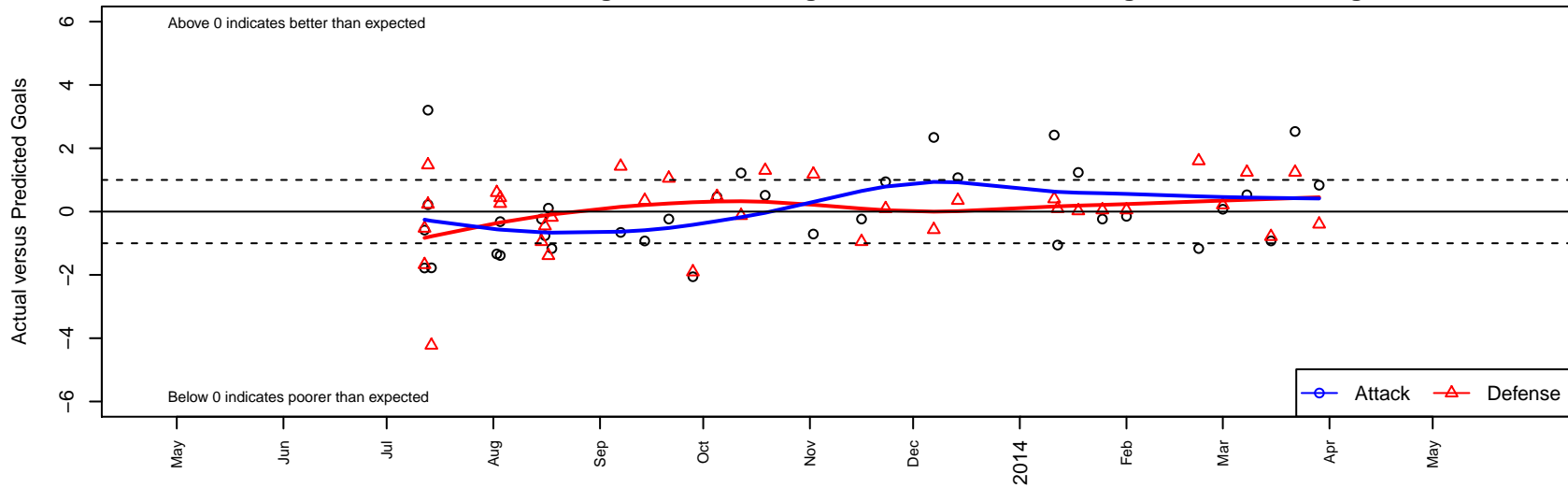
Kent United White G01

Kent United
 Kent, WA
 G01 total strength=548
 attack=0.61 defense=0.29
 fall league = NPSL G12D2, NPSL Spr G12D1
 notes= Pumas
 alt names used:
 Kent United White G01
 Kent United G01 White

Venues played:
 Kent Cornucopia Cup GU12/GU13 Silver U13
 Blast Off GU12 B
 Bigfoot Silver 1 U12
 NPSL G12D2
 Founders Cup G01
 NPSL Spr G12D1



Kent United White G01
 Dots are actual minus expected GF (blue circles) and GA (red triangles).
 Blue line is smoothed change in attack strength. Red is smoothed change in defense strength.



	date	home		away		venue	pred.home	pred.away
7524	2014-03-29	Kent United White G01	2	Crossfire Select Granston G01	3	NPSL Spr G12D1	1.17	2.60
7466	2014-03-22	Seattle United S Black G01	0	Kent United White G01	4	NPSL Spr G12D1	1.24	1.47
7378	2014-03-15	Kent United Green G01	3	Kent United White G01	0	NPSL Spr G12D1	2.21	0.93
7281	2014-03-08	Kent United White G01	2	Seattle United S Black G01	0	NPSL Spr G12D1	1.47	1.24
7178	2014-03-01	Kent United White G01	1	Kent United Green G01	2	NPSL Spr G12D1	0.93	2.21
7103	2014-02-22	Crossfire Select Granston G01	1	Kent United White G01	0	NPSL Spr G12D1	2.60	1.17
6988	2014-02-01	Washington Timbers Burgundy G01	2	Kent United White G01	1	Founders Cup G01	2.05	1.15
6960	2014-01-25	Kent United White G01	2	FC Edmonds Elite G01	1	Founders Cup G01	2.24	1.05
6908	2014-01-18	Kent United White G01	5	MIFC Thunder G01	1	Founders Cup G01	3.76	1.02
6891	2014-01-12	Seattle United NE Blue G01	1	Kent United White G01	2	Founders Cup G01	1.09	3.06
6864	2014-01-11	Norpoint FC Puma Cats G01	0	Kent United White G01	7	Founders Cup G01	0.40	4.58
6843	2013-12-14	Kent United White G01	4	ISC Arsenal Red G01	0	NPSL G12D2	2.93	0.35
6818	2013-12-07	NSC Reign G01	2	Kent United White G01	4	NPSL G12D2	1.43	1.66
6671	2013-11-23	Kent United White G01	4	Seattle United NE Blue G01	1	NPSL G12D2	3.06	1.09
6586	2013-11-16	FC Edmonds Elite G01	2	Kent United White G01	2	NPSL G12D2	1.05	2.24
6338	2013-11-02	Kent United White G01	1	North Whidbey Islanders G01	0	NPSL G12D2	1.71	1.18
6022	2013-10-19	Kent United White G01	3	Seattle United Shoreline Blue G01	0	NPSL G12D2	2.49	1.30
5862	2013-10-12	BIFC Blue G01	1	Kent United White G01	3	NPSL G12D2	0.87	1.78
5678	2013-10-05	Kent United White G01	3	SCORE Patriots Blue G01	0	NPSL G12D2	2.53	0.48
5508	2013-09-28	Seattle United NE Blue G01	3	Kent United White G01	1	NPSL G12D2	1.09	3.06
5371	2013-09-21	FC Edmonds Elite G01	0	Kent United White G01	2	NPSL G12D2	1.05	2.24
5205	2013-09-14	ISC Arsenal Red G01	0	Kent United White G01	2	NPSL G12D2	0.35	2.93
5053	2013-09-07	Kent United White G01	1	NSC Reign G01	0	NPSL G12D2	1.66	1.43
4821	2013-08-18	Snohomish United Red G01	2	Kent United White G01	1	Bigfoot Silver 1 U12	1.82	2.17
4750	2013-08-17	Kent United White G01	1	Westsound FC Red G01	4	Bigfoot Silver 1 U12	0.89	2.61
4712	2013-08-16	Silver FC G01	1	Kent United White G01	3	Bigfoot Silver 1 U12	0.55	3.76
4700	2013-08-15	FC Edmonds Elite G01	2	Kent United White G01	2	Bigfoot Silver 1 U12	1.05	2.24
4498	2013-08-03	UPSC Blue Starz G01	1	Kent United White G01	2	Blast Off GU12 B	1.26	3.39

	date	home		away		venue	pred.home	pred.away
4501	2013-08-03	Kent United White G01	4	Kent United Black G01	0	Blast Off GU12 B	4.32	0.44
4453	2013-08-02	FWFC Fireballs G01	0	Kent United White G01	3	Blast Off GU12 B	0.60	4.34
8318	2013-07-14	FC Alliance B G01	6	Kent United White G01	0	Kent Cornucopia Cup GU12/GU13 Silver U13	1.78	1.78
8280	2013-07-13	Kent United White G00	1	Kent United White G01	5	Kent Cornucopia Cup GU12/GU13 Silver U13	1.23	1.80
8282	2013-07-13	FME Yellow Jackets G01	0	Kent United White G01	2	Kent Cornucopia Cup GU12/GU13 Silver U13	1.47	1.78
8240	2013-07-12	Kent United White G01	1	NORTAC Sparta Red G01	3	Kent Cornucopia Cup GU12/GU13 Silver U13	1.58	1.32
8241	2013-07-12	FME Yellow Jackets G01	2	Kent United White G01	0	Kent Cornucopia Cup GU12/GU13 Silver U13	1.47	1.78